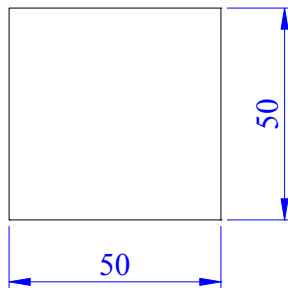


DERIVADOS DA MADEIRA

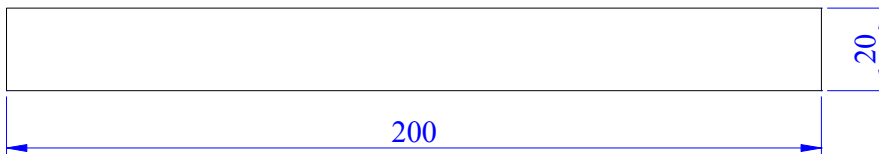
TABALHOS PRÁTICOS

Dimensões dos provetes | Referenciais | Tipos de derivados e nº de provetes/tipo

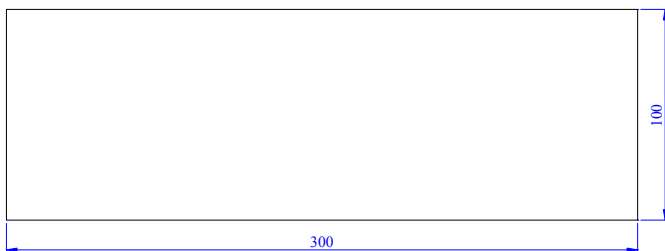


EN323 – Massa Volúmica
EN322 – Teor em Água
EN 317 – Inchamento em espessura

Contraplacado - 2x2esp.
MDF - 2x2esp.
Aglomerado Partículas – 2x2esp.

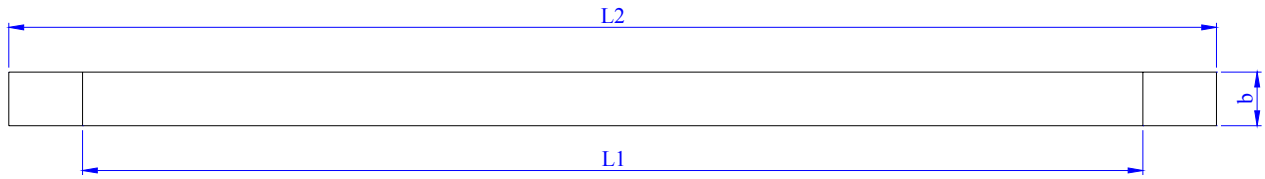


EN318 – Variações dimensionais com variações de HR | MDF – 2x2esp



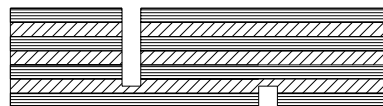
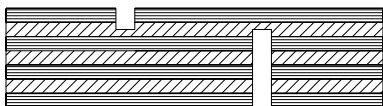
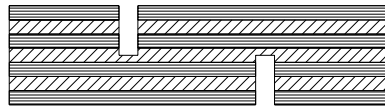
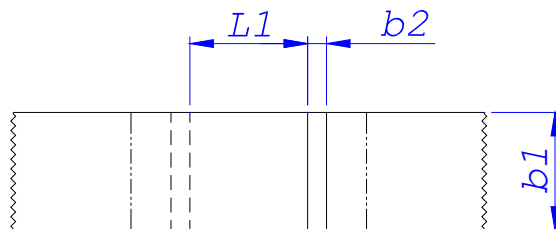
EN382-1 – Absorção Superficial

MDF – 2x2tipos



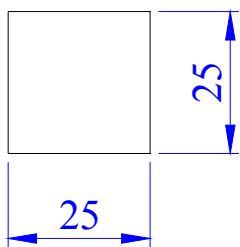
EN310 – Módulo Elasticidade em Flexão

Contraplacado – 1
MDF – 1
Aglomerado Partículas – 1



EN314-1 – Qualidade Colagem do Contraplacado

Contraplado – 2 x “nº linhas de cola”



EN120 – Teor Formaldeído, Método Perfurador

MDF – 12 Provetes