

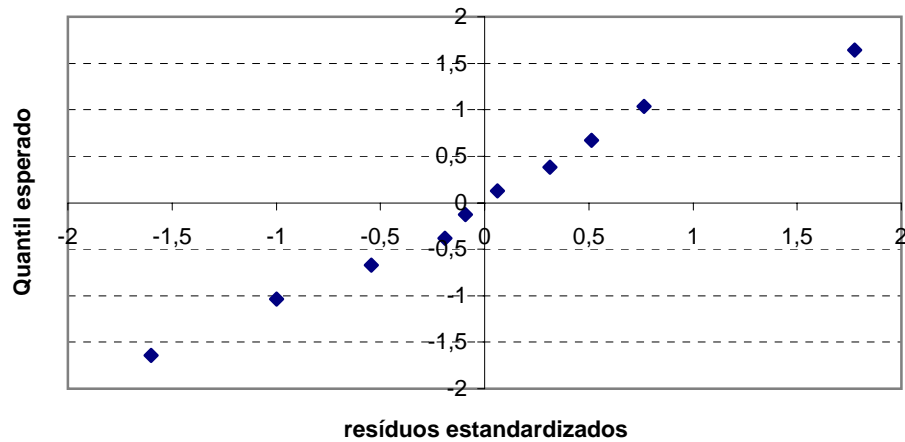
Pessoa	Idade	Gastos Diários							
$i$	$x_i$	$y_i$	$x_i^2$	$y_i^2$	$x_i \cdot y_i$	y chap	$d_i$	$d_i^2$	
1	16	5	256	25	80	6,525476	-1,525476	2,327077027	
2	22	8	484	64	176	8,832386	-0,832386	0,692866453	
3	22	10	484	100	220	8,832386	1,167614	1,363322453	
4	28	11	784	121	308	11,139296	-0,139296	0,019403376	
5	30	12	900	144	360	11,908266	0,091734	0,008415127	
6	31	12	961	144	372	12,292751	-0,292751	0,085703148	
7	36	15	1296	225	540	14,215176	0,784824	0,615948711	
8	44	20	1936	400	880	17,291056	2,708944	7,338377595	
9	55	22	3025	484	1210	21,520391	0,479609	0,230024793	
10	60	21	3600	441	1260	23,442816	-2,442816	5,96735001	
<b>TOTAL</b>	344	136	13726	2148	5406			18,64848869	

## Q-Q Plot e P-P Plot

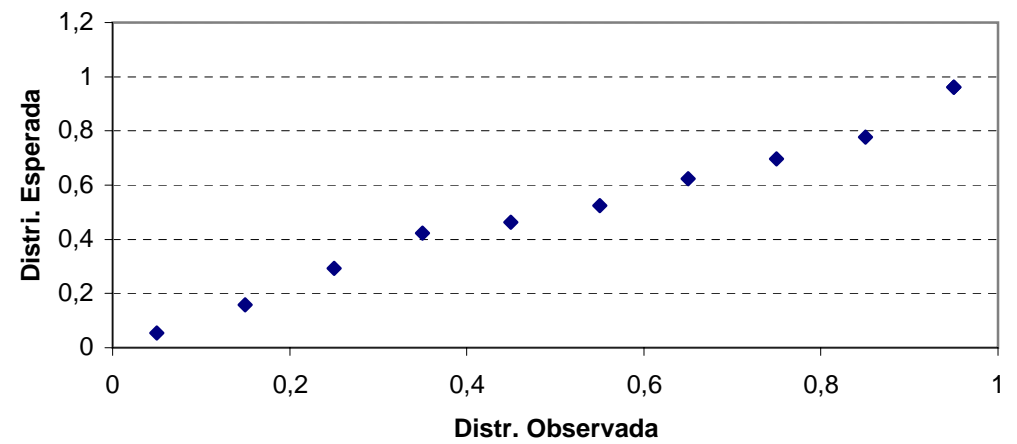
	residuos $d_i$ ordenados	$d_i^2$	Residuo estan $d_i$ (abcissa QQ plot)	Pro. Obs. ( $j-0,5$ )/10 (abcissa PP plot)	quantil teorico - $z_j$ $P(Z < z_j) = (j-0,5)/10$ (ordenada QQ plot)	Pro. esperada (ordenada PP plot)
1	-2,442816	5,96735001	-1,599977696	0,05	-1,644853627	0,054801766
2	-1,525476	2,327077027	-0,999145075	0,15	-1,036433389	0,158862209
3	-0,832386	0,692866453	-0,545190074	0,25	-0,67448975	0,292811399
4	-0,292751	0,085703148	-0,191743902	0,35	-0,385320466	0,423971408
5	-0,139296	0,019403376	-0,091235072	0,45	-0,125661347	0,463652904
6	0,091734	0,008415127	0,060083262	0,55	0,125661347	0,52395534
7	0,479609	0,230024793	0,314130783	0,65	0,385320466	0,623289145
8	0,784824	0,615948711	0,514038264	0,75	0,67448975	0,696387381
9	1,167614	1,363322453	0,764755249	0,85	1,036433389	0,77779135
10	2,708944	7,338377595	1,774284261	0,95	1,644853627	0,961991929
		18,64848869				

S= 1,526781283

### Q-Q Plot



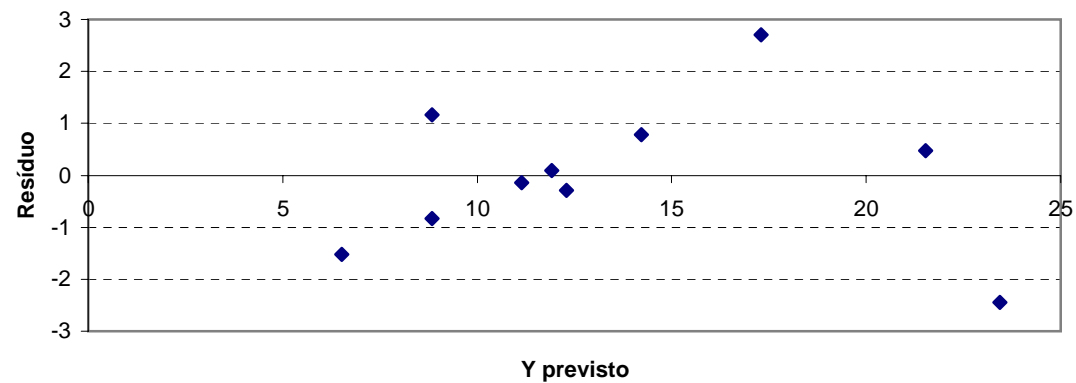
### P-P Plot



## Gráfico Residual

i	Resíduos	Y chap
1	-1,525476	6,525476
2	-0,832386	8,832386
3	1,167614	8,832386
4	-0,139296	11,139296
5	0,091734	11,908266
6	-0,292751	12,292751
7	0,784824	14,215176
8	2,708944	17,291056
9	0,479609	21,520391
10	-2,442816	23,442816

### Gráfico Residual



## Teste de Durbin-Watson

i	Resíduos - di	di <sup>2</sup>	(d(i+1)-di) <sup>2</sup>
1	-1,525476	2,327077027	0,480373748
2	-0,832386	0,692866453	4
3	1,167614	1,363322453	1,708013748
4	-0,139296	0,019403376	0,053374861
5	0,091734	0,008415127	0,147828715
6	-0,292751	0,085703148	1,161167881
7	0,784824	0,615948711	3,702237774
8	2,708944	7,338377595	4,969934542
9	0,479609	0,230024793	8,540567881
10	-2,442816	5,96735001	0
soma		18,64848869	24,76349915

estatística d 1,327909171  
 du=1.32  
 [du,4-du] [1.32, 2.68]

## Diagrama de Dispersão

X	Y
16	5
22	8
22	10
28	11
30	12
31	12
36	15
44	20
55	22
60	21

